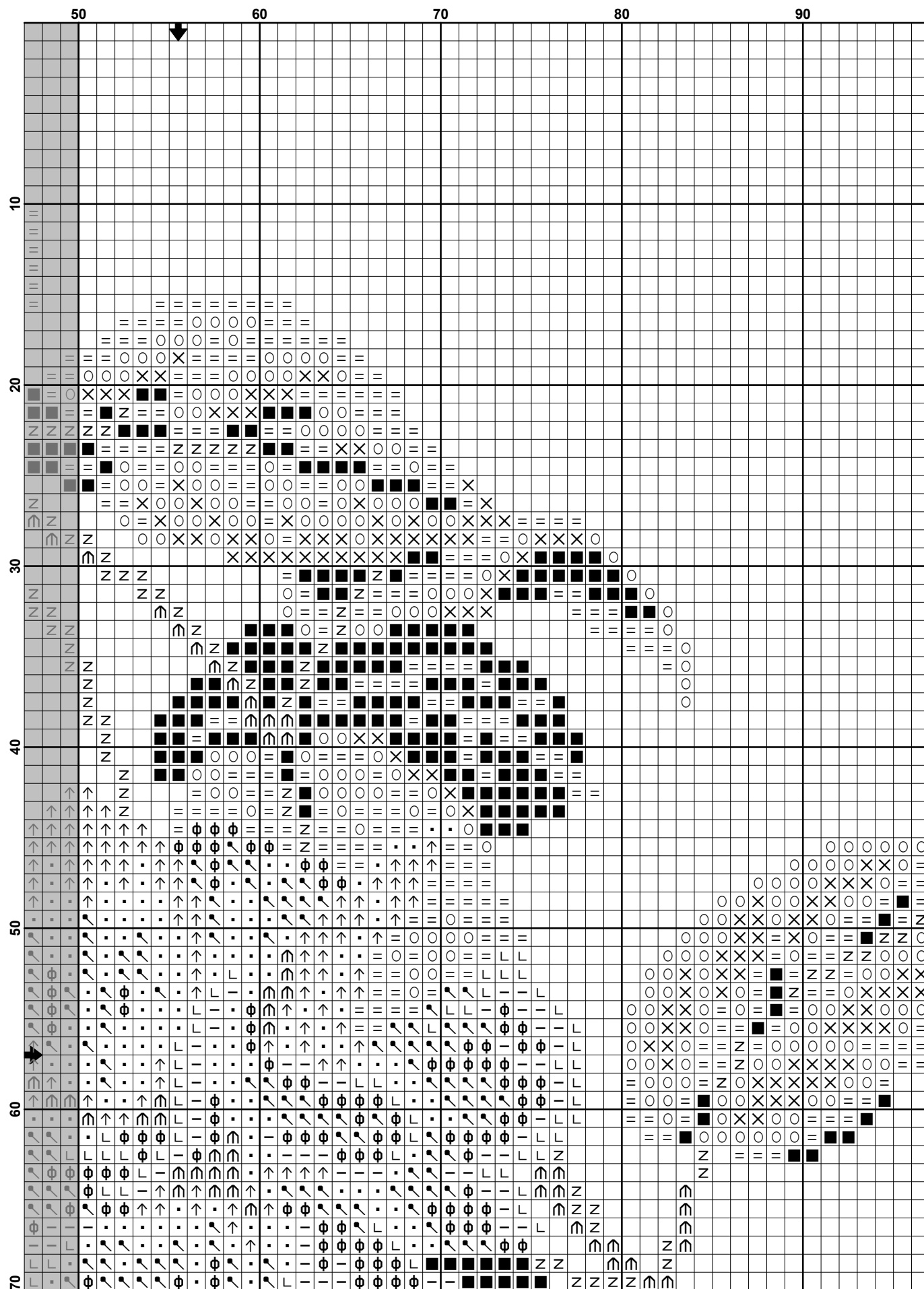
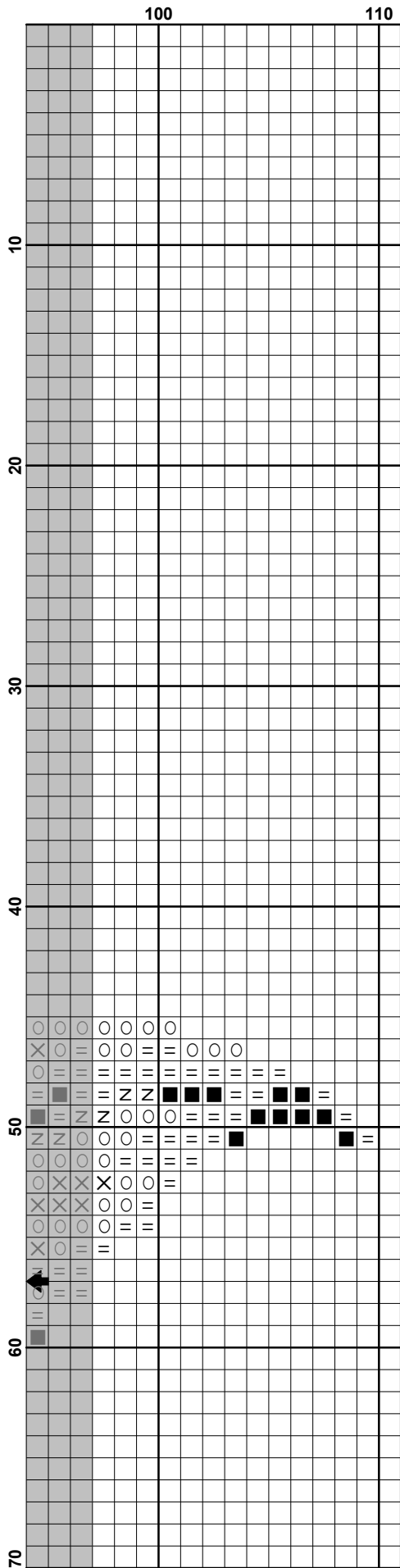
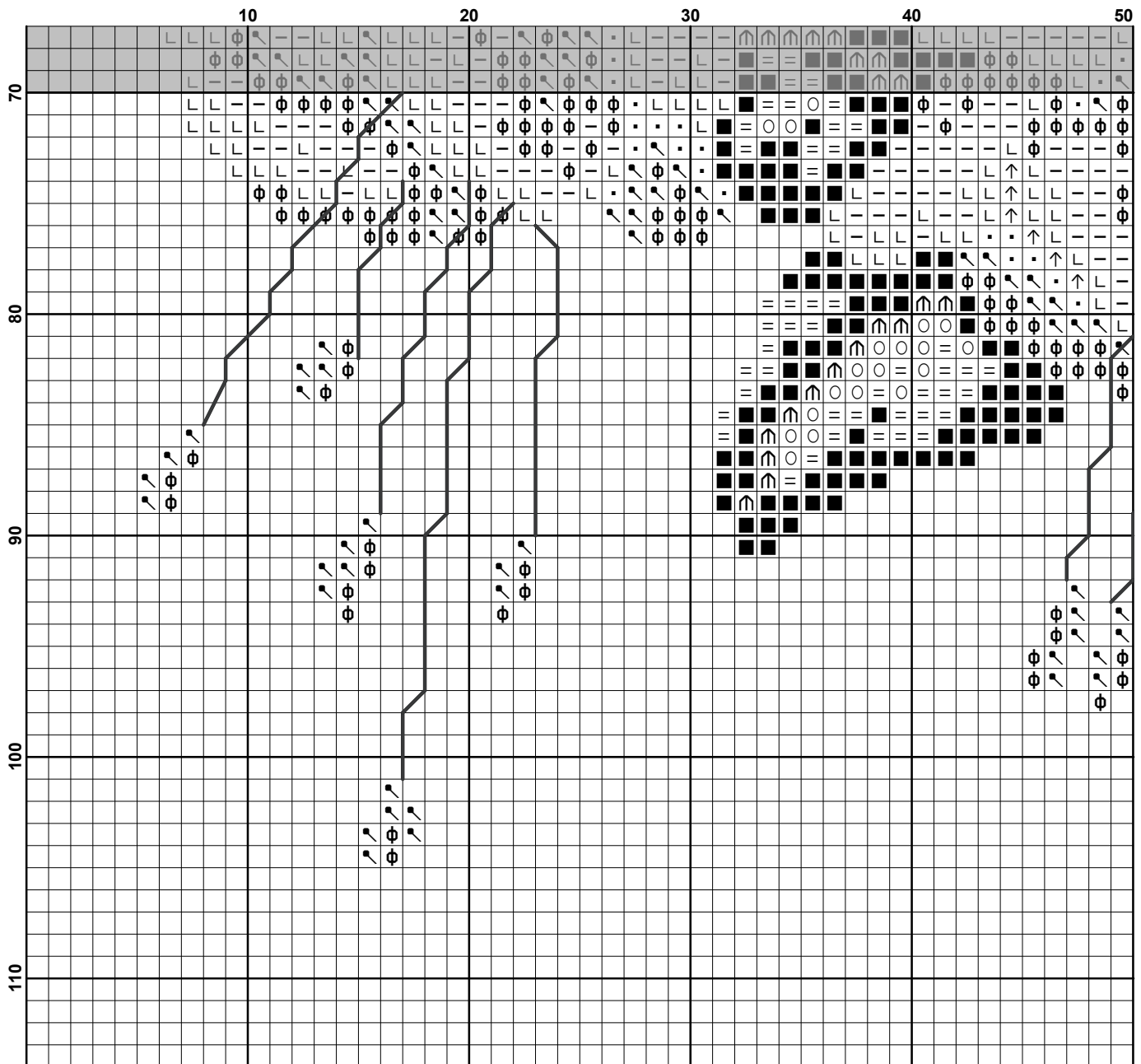


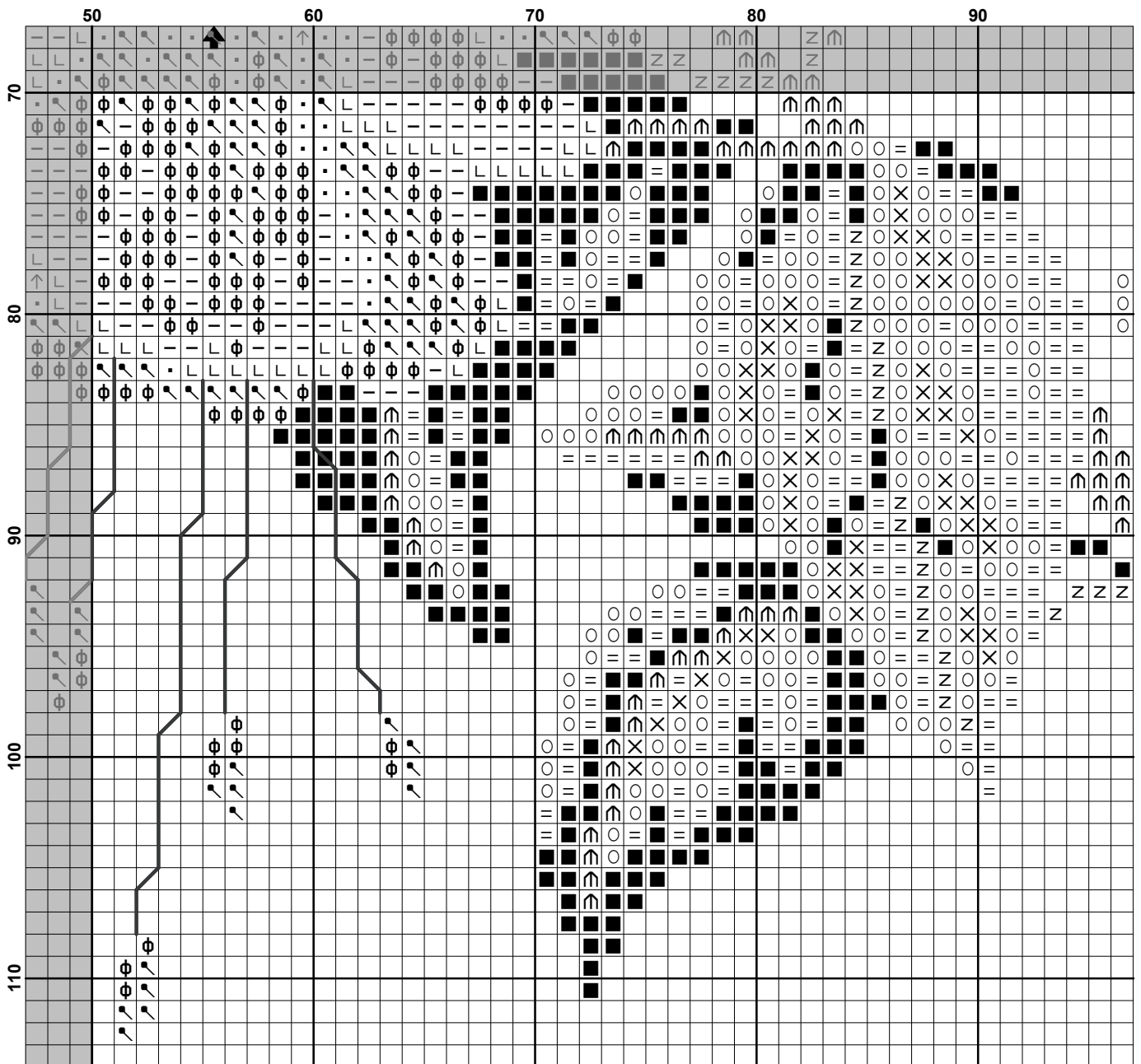


	10	20	30	40	50
10					
20					
30					
40					
50					
60					
70					











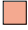
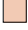


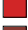





Pattern Name: Fuksia

Aida 14, White


109w X 112h Stitches

Size(s): 14 Count, 19.78w X 20.32h cm
 16 Count, 17.30w X 17.78h cm
 18 Count, 15.38w X 15.80h cm
 11 Count, 25.17w X 25.86h cm

Floss Used for Full Stitches:

Symbol	Strands	Type	Number	Color
 ↑	2	DMC	304	Christmas Red-MD
 ↖	2	DMC	351	Coral
 ϕ	2	DMC	352	Coral-LT
 -	2	DMC	353	Peach
 ■	2	DMC	500	Blue Green-VY DK
 =	2	DMC	501	Blue Green-DK
 ·	2	DMC	666	Christmas Red-BRT
 z	2	DMC	815	Garnet-MD
 ↗	2	DMC	902	Garnet-VY DK
 L	2	DMC	3770	Tawny-VY LT
 X	2	DMC	3813	Blue Green-LT
 O	2	DMC	3816	Celadon Green-MD

Floss Used for Back Stitches:

Symbol	Strands	Type	Number	Color
 —	1	DMC	351	Coral

Usage Summary**Strands Per Skein:** 6**Skein Length:** 795.0 cm

Type	Number	Full	Half	Quarter	Petite	Back(cm)	Str(cm)	Spec(cm)	French	Bead	Skein Est.
DMC 304	304	316	0	0	0	0.0	0.0	0.0	0	0	1.000
DMC 351	351	472	0	0	0	12.1	0.0	0.0	0	0	1.000
DMC 352	352	506	0	0	0	0.0	0.0	0.0	0	0	1.000
DMC 353	353	346	0	0	0	0.0	0.0	0.0	0	0	1.000
DMC 500	500	671	0	0	0	0.0	0.0	0.0	0	0	1.000
DMC 501	501	743	0	0	0	0.0	0.0	0.0	0	0	1.000
DMC 666	666	408	0	0	0	0.0	0.0	0.0	0	0	1.000
DMC 815	815	282	0	0	0	0.0	0.0	0.0	0	0	1.000
DMC 902	902	231	0	0	0	0.0	0.0	0.0	0	0	1.000
DMC 3770	3770	275	0	0	0	0.0	0.0	0.0	0	0	1.000
DMC 3813	3813	278	0	0	0	0.0	0.0	0.0	0	0	1.000
DMC 3816	3816	663	0	0	0	0.0	0.0	0.0	0	0	1.000