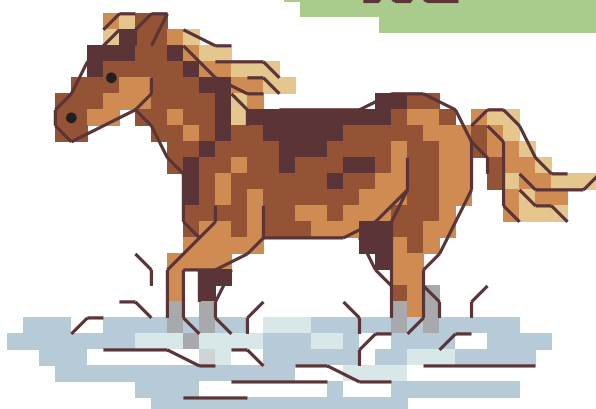
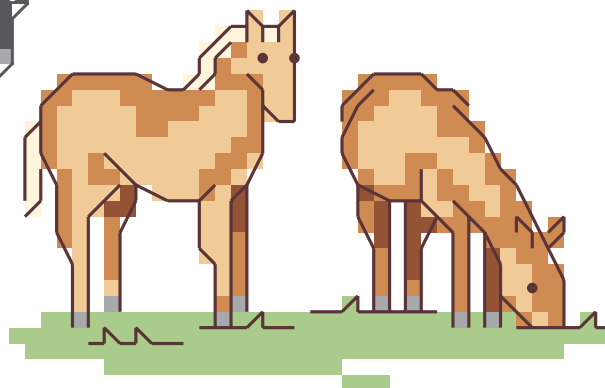
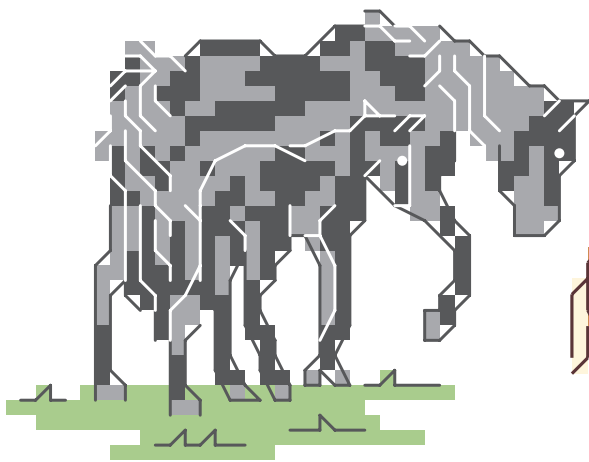
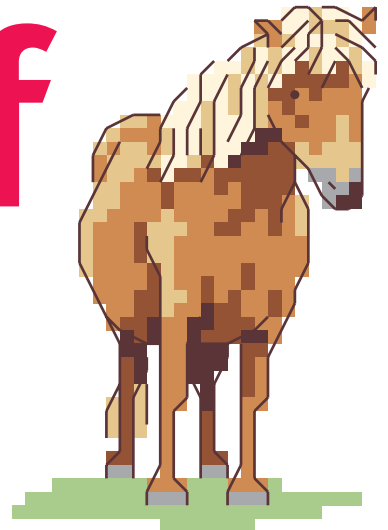


The Year of the Horse

Celebrate the Chinese New Year with these fab designs by **Maria Diaz**



Horses

DMC Anchor Madeira
Cross stitch in two strands

□	blanc	2	2402
A	209	109	0803
■	310	403	2400
✻	413	400	1713
+	414	235	1714
▽	415	398	1802
●	433	358	2602
▼	435	1046	2010
W	437	362	2012
♥	666	46	0210
N	712	926	2101
b	738	367	2013
◀	938	380	2204
3	957	50	0504
■	989	241	1401
☆	3755	140	1013
P	3770	1009	2314
♡	3841	9159	1001
§	E168		

Backstitch in one strand

—	blanc	2	2402
—	310	403	2400
—	413	400	1713
—	666	46	0210
—	938	380	2204
—	E168		

French knots in one strand

●	blanc	2	2402
●	310	403	2400
●	413	400	1713
●	938	380	2204
●	E168		

Contains fractional stitches

Maximum stitch count
41 high x 41 wide
Design area on 14-count fabric
7.5x7.5cm (3x3in)
These designs were stitched by
Zofia Cartledge
using DMC stranded cotton and
DMC Light Effects

