



Ключ для дизайна «Сонная цыпа»

Ткань: 14 каунт Аида

Размер в крестиках: 107 x 111



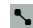

Размер готовой работы: 19.41 x 20.14 см

Нитки: DMC

Крест (в 2 нити)

Символ	Номер	Название цвета	Символ	Номер	Название цвета
	310	Black		402	Pottery brown
	422	Light oak		471	Tarragon green
	498	Dark red		503	Thyme green
	543	Shell beige		580	Cactus green
	606	Red orange		608	Pansy orange
	666	Bright red		712	Cream
	720	Rust		729	Honey gold
	734	Light Olive green		739	Dune cream
	740	Orange		782	Wicker brown
	783	Old gold		905	Parrot green
	919	Red copper		928	Light pearl grey
	950	Beige		3046	Rye beige
	3347	Insect green		3777	Leather red
	3865	Winter white		3866	Garlic cream
	ECRUT	ECRUT		720+402	
	919+720				

Полукрест (в 2 нити)

Символ	Номер	Название цвета	Символ	Номер	Название цвета
	471	Tarragon green		503	Thyme green
	928	Light pearl grey		3347	Insect green

Бэкстич (в 1 нить)



DMC 310

Black

Схема разработана на курсе Любови Водениковой «РЕАЛЬНЫЙ ДИЗАЙНЕР».

Сайт: <https://education.realstitch.ru/>

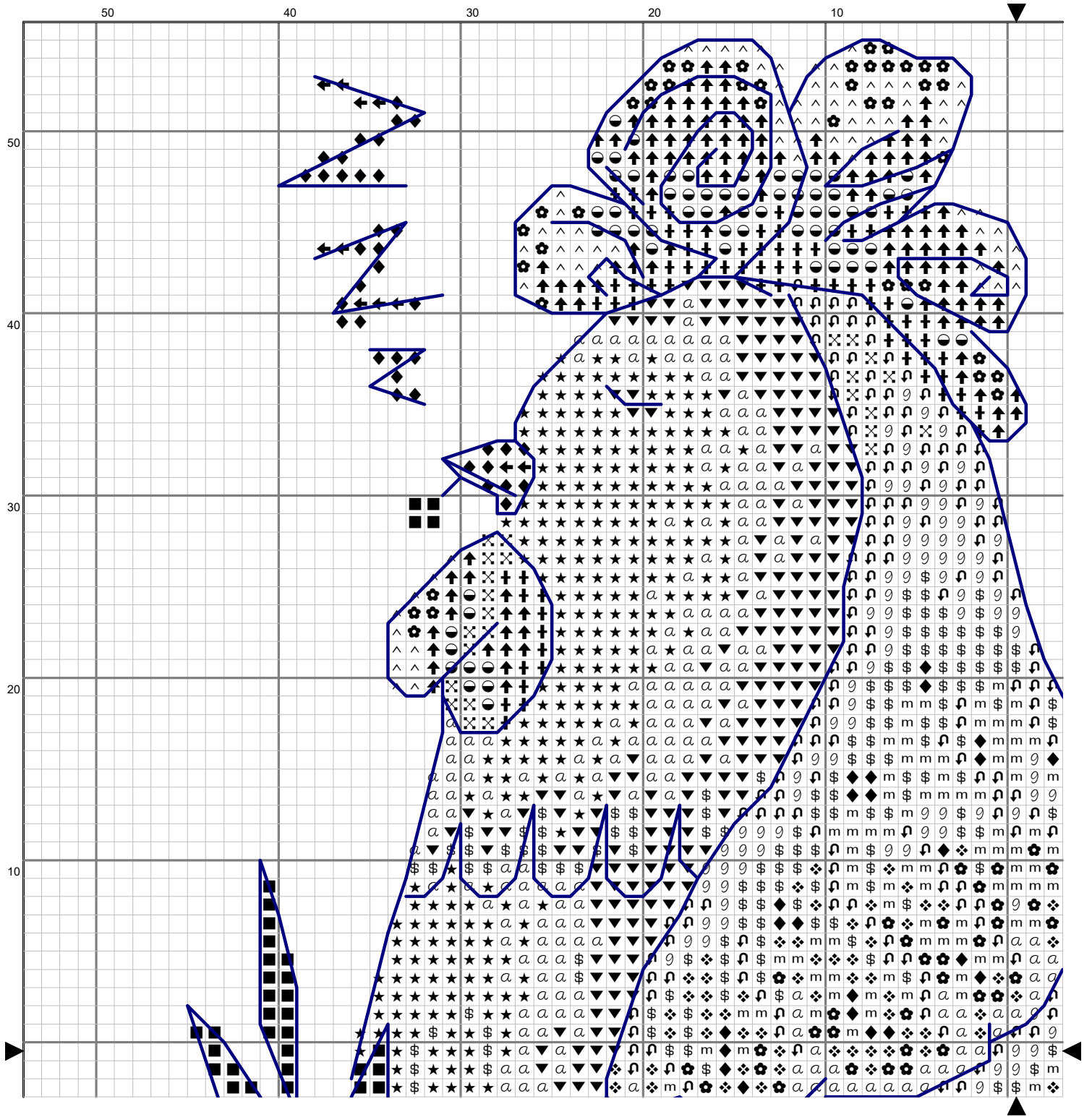
Аккаунт в VK: vk.com/slovev

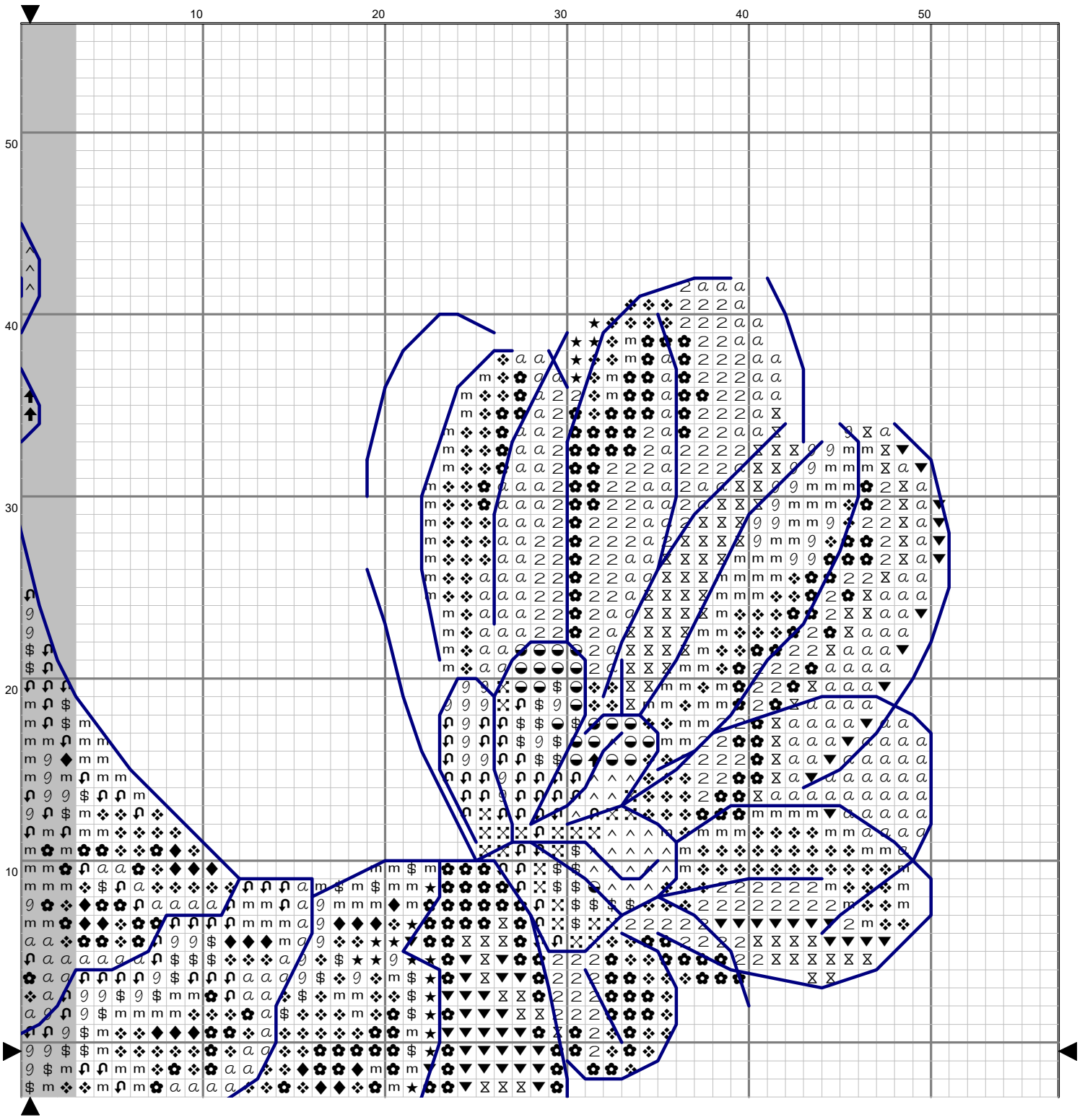
Группа в VK: vk.com/pattern_with_love (РЕАЛЬНАЯ ВЫШИВКА)

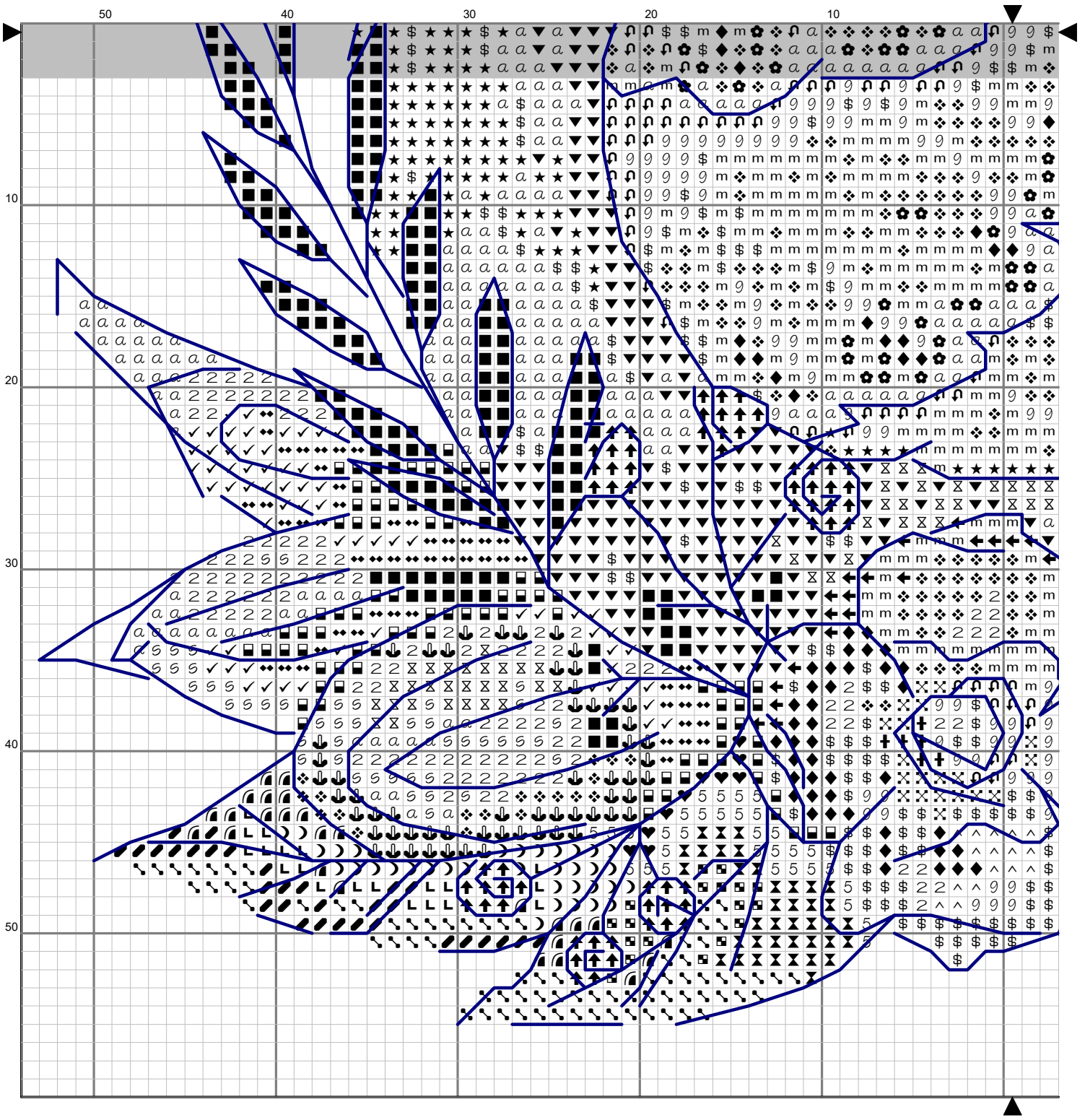
Расход нитей

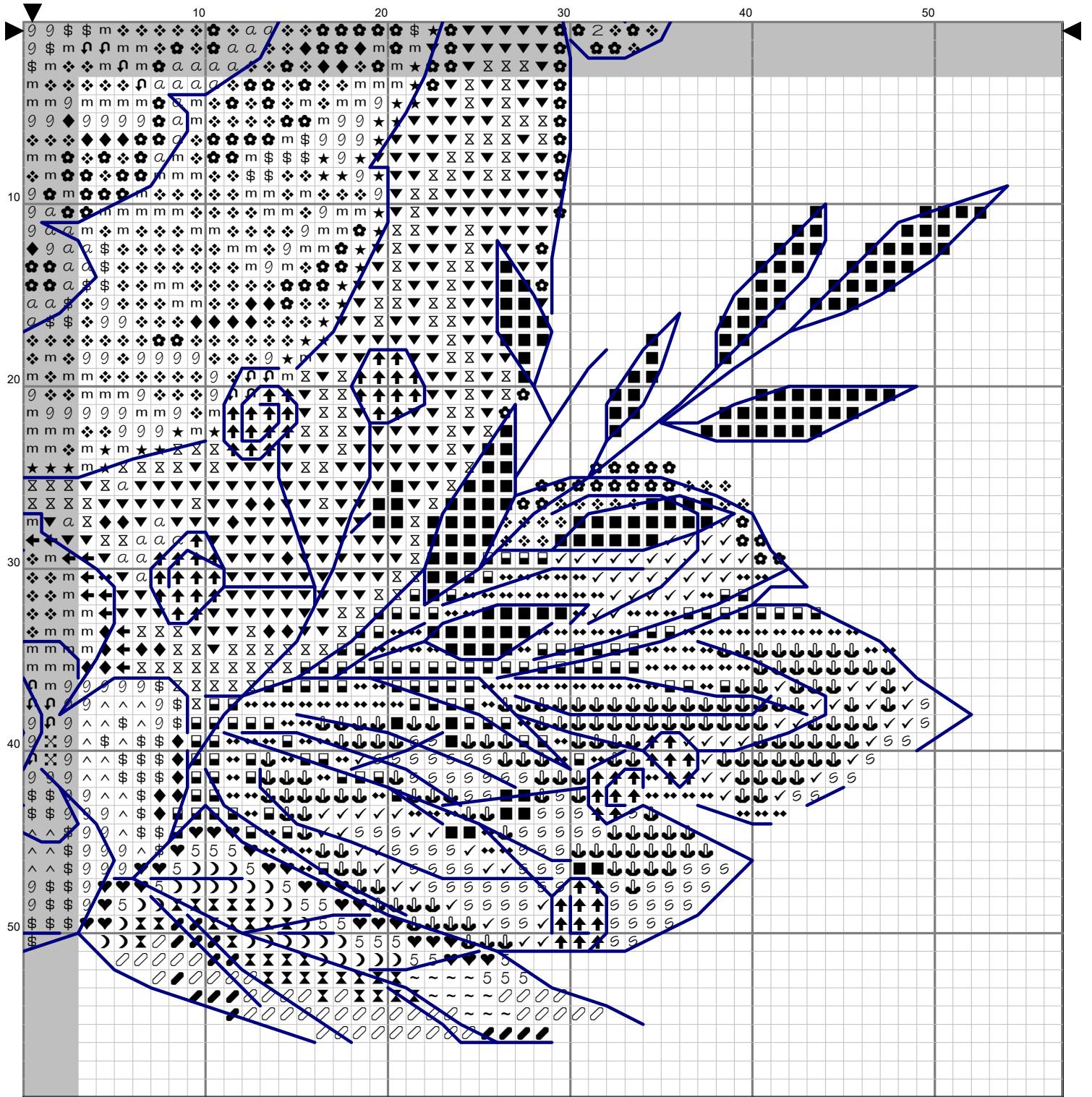
(для 14 канвы с учетом 30% запаса)

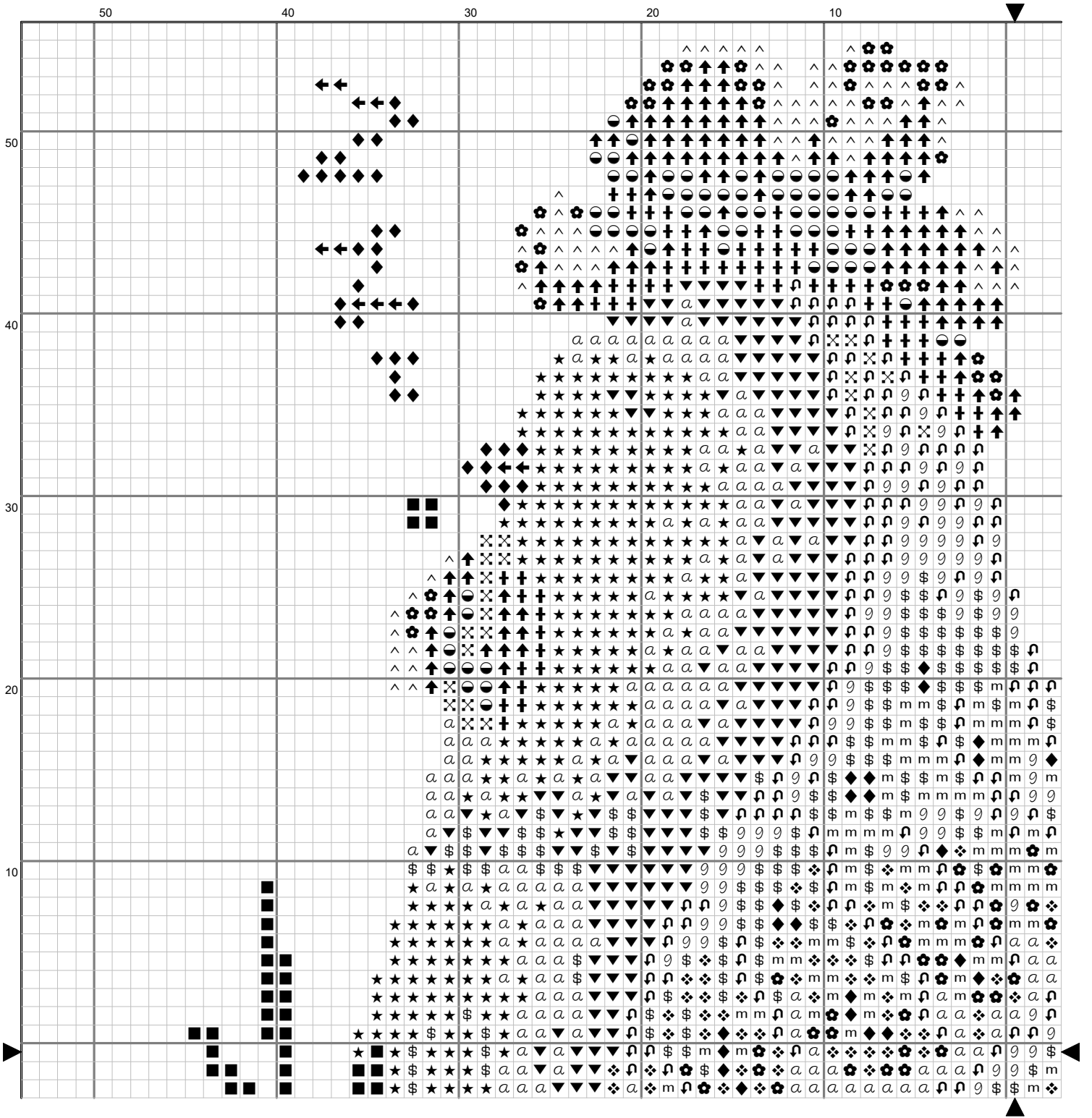
<i>Нитки (DMC)</i>	<i>Всего</i>
310	5.9
402	3.8
422	1.1
471	0.6
498	0.4
503	0.4
543	1.3
580	0.2
606	1.3
608	0.7
666	0.5
712	3.1
720	3.6
729	0.9
734	0.1
739	0.7
740	0.8
782	1.0
783	0.2
905	0.3
919	2,2
928	0.5
950	1.7
3046	0.7
3347	0.4
3777	0.3
3865	2.0
3866	3.6
ECRUT	1.3

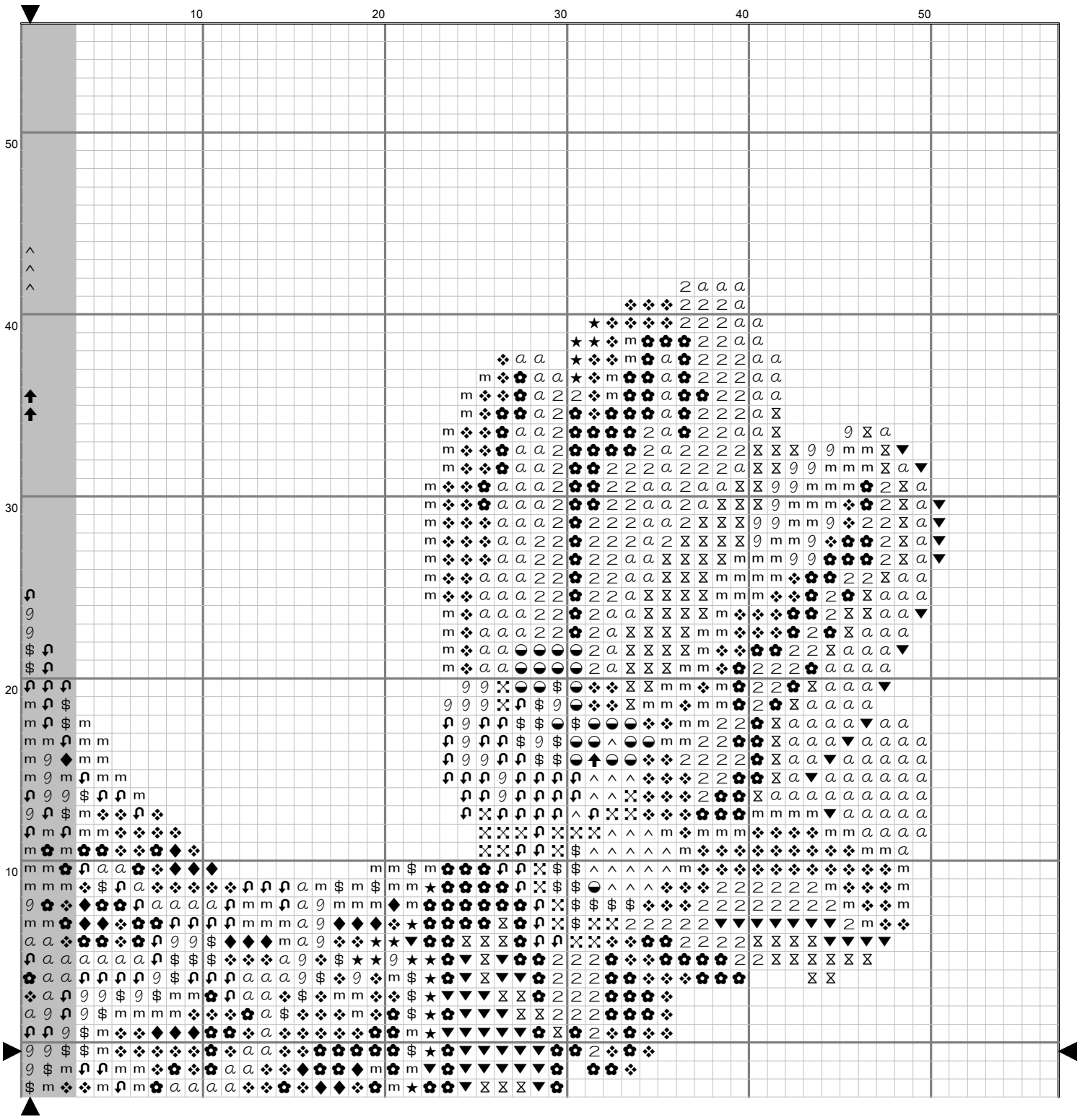












This is a complex grid-based puzzle. The grid is 50 columns wide and 50 rows high. The columns are numbered 50, 40, 30, 20, and 10 from left to right. The rows are numbered 10, 20, 30, 40, and 50 from top to bottom. The puzzle consists of a grid of cells, many of which contain symbols. The symbols include letters (a, s), numbers (2, 5), stars, dollar signs, and geometric shapes like squares, circles, and triangles. Some cells are empty, while others are filled with these symbols. The symbols are arranged in a way that suggests a pattern or a specific logic. For example, in the top-left corner, there are several 'a' characters. In the bottom-right corner, there are several '5' characters. The symbols are scattered throughout the grid, with some appearing in clusters and others in isolation. The overall appearance is that of a highly detailed and challenging puzzle.

This is a complex grid-based puzzle, likely a crossword or logic puzzle, with columns labeled 10, 20, 30, 40, 50 and rows labeled 10, 20, 30, 40, 50. The grid is filled with various symbols and characters, including letters (a, m, g, \$, ^, ~, 5, X, O), numbers (2), and icons (stars, diamonds, hearts, circles, squares, triangles, arrows, checkmarks, crosses). Some cells are shaded gray, particularly in the top right and bottom left corners. The puzzle appears to be a combination of word search and logic elements, with some cells containing numbers and others containing symbols that might represent specific words or patterns.

