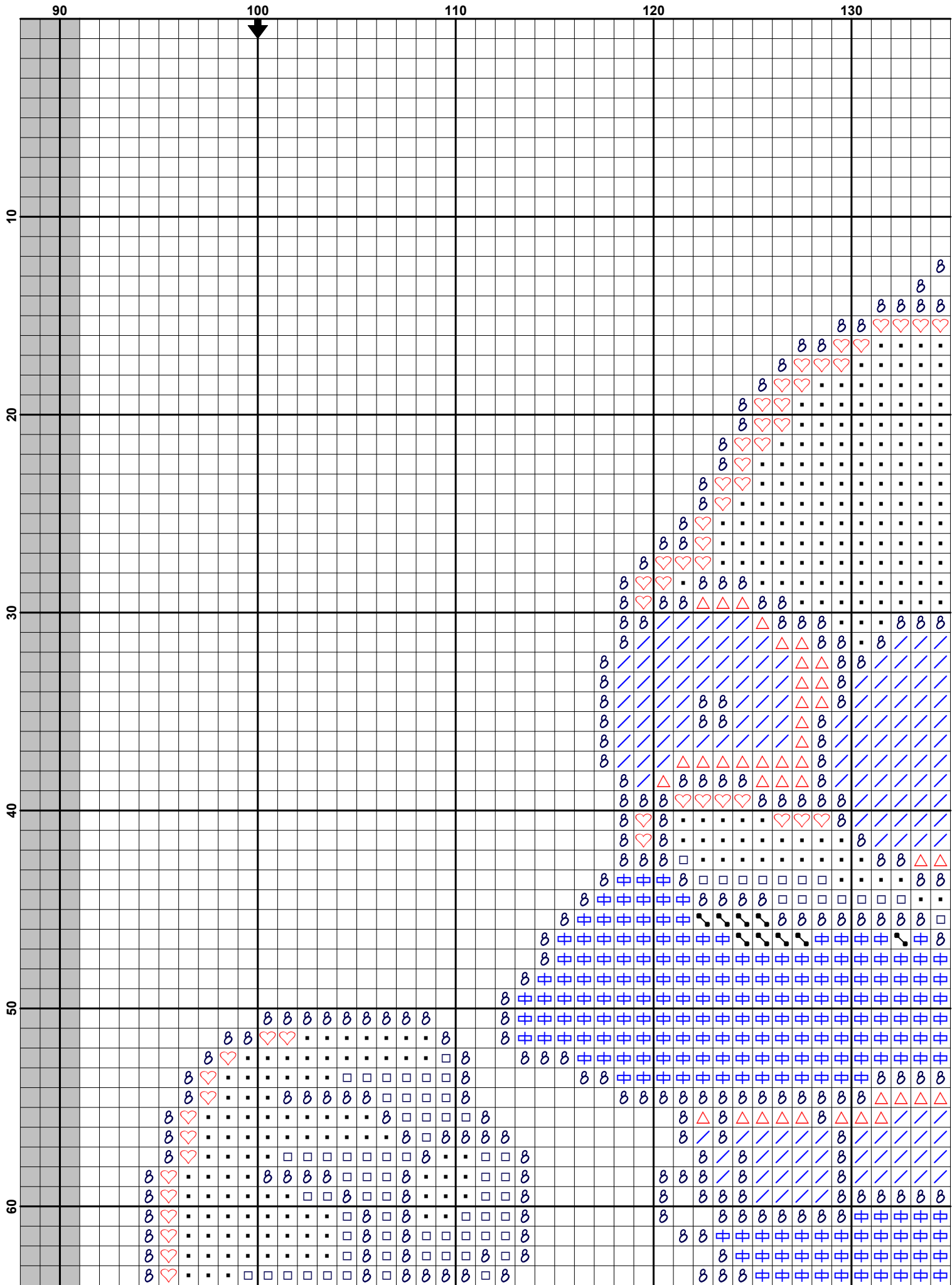
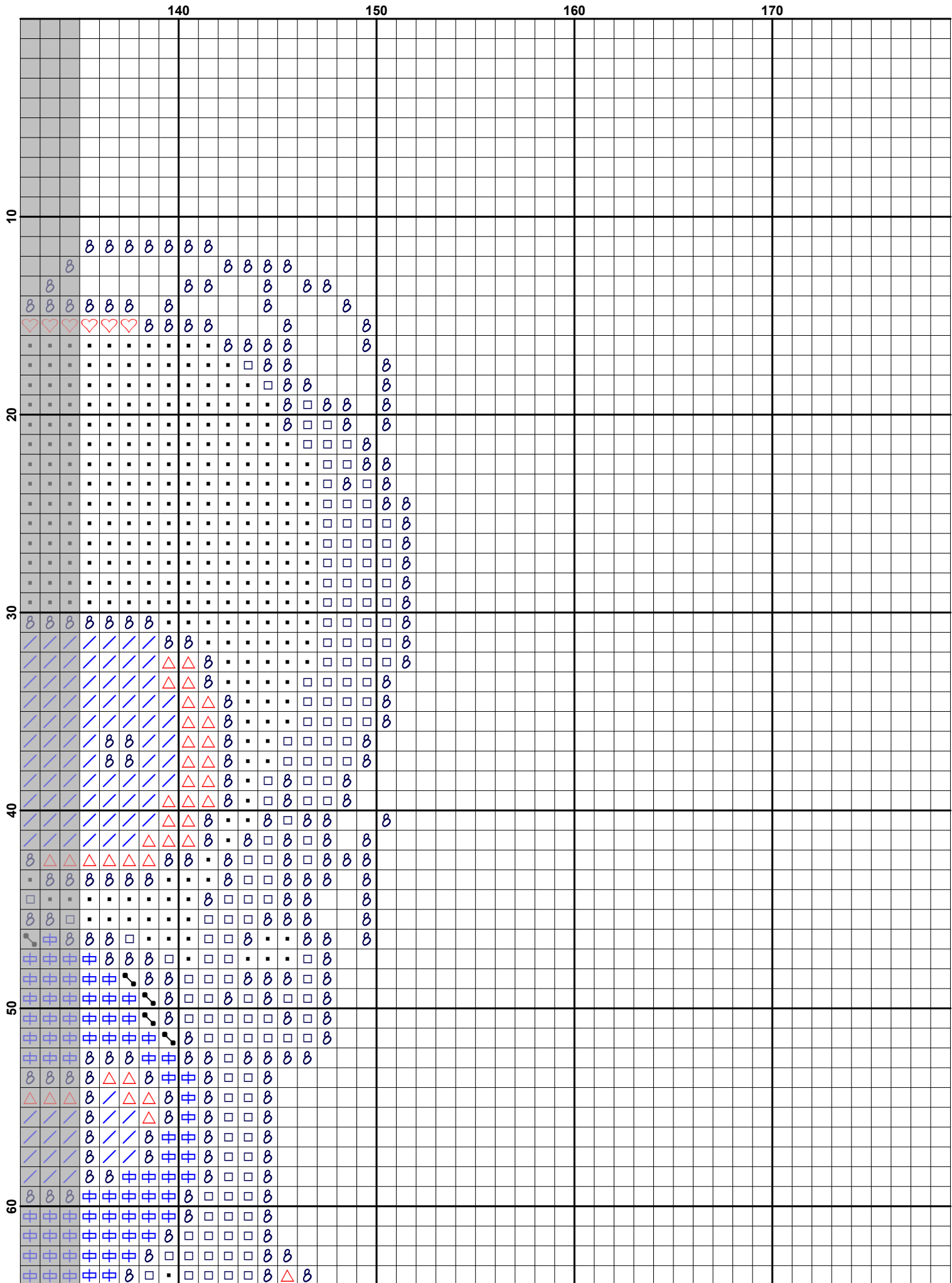
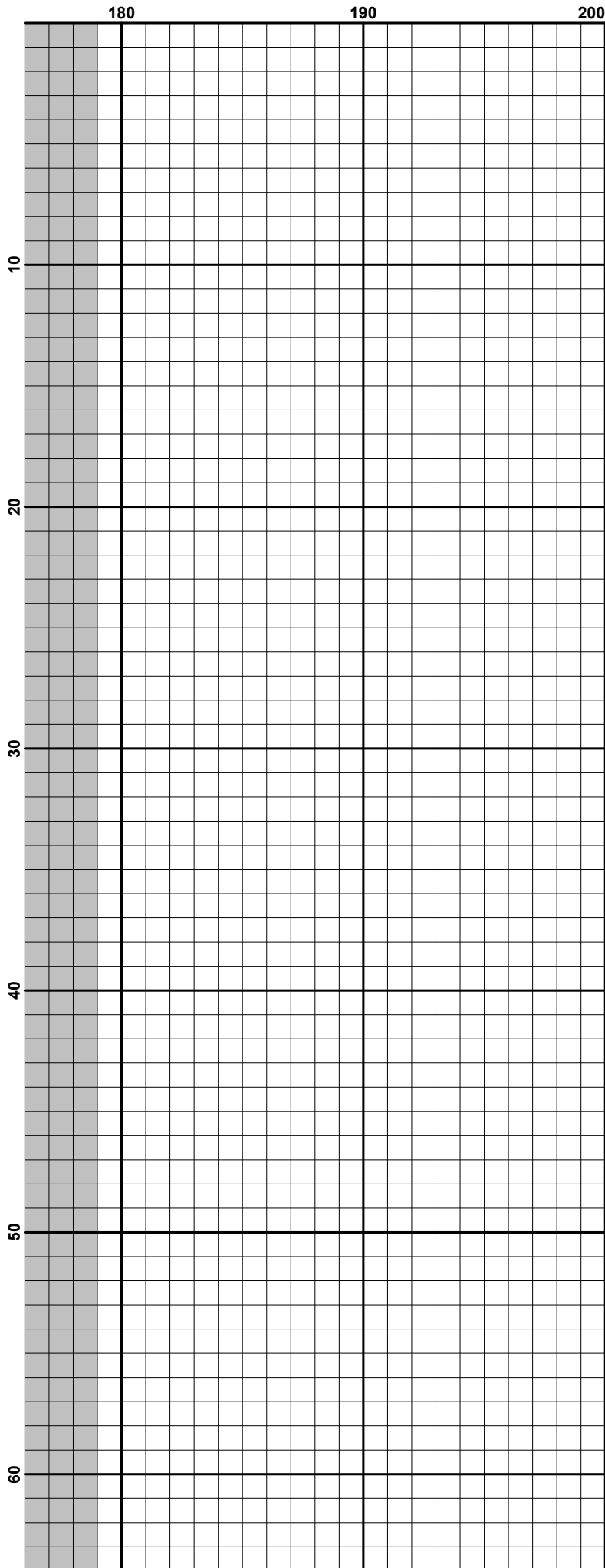
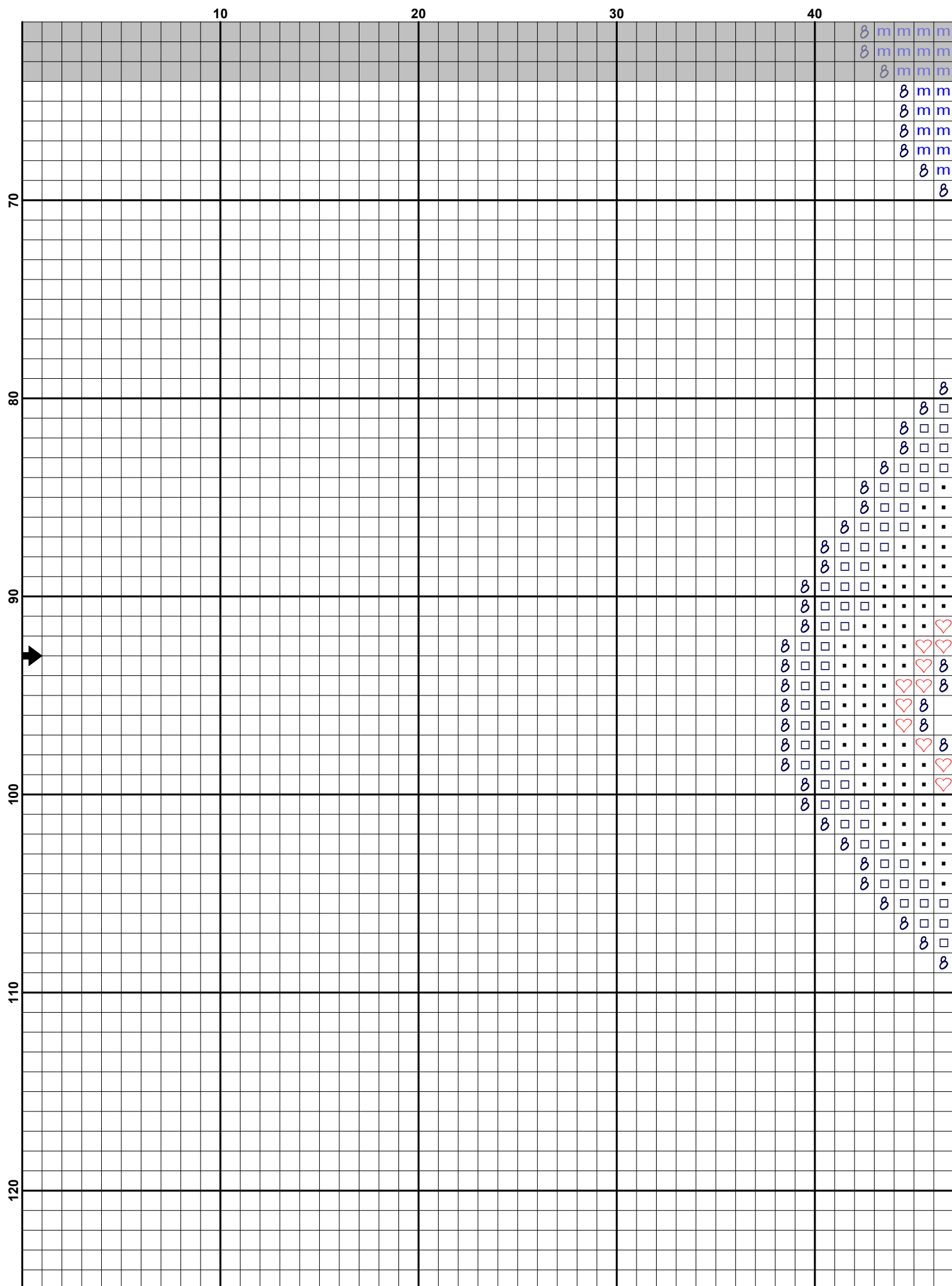


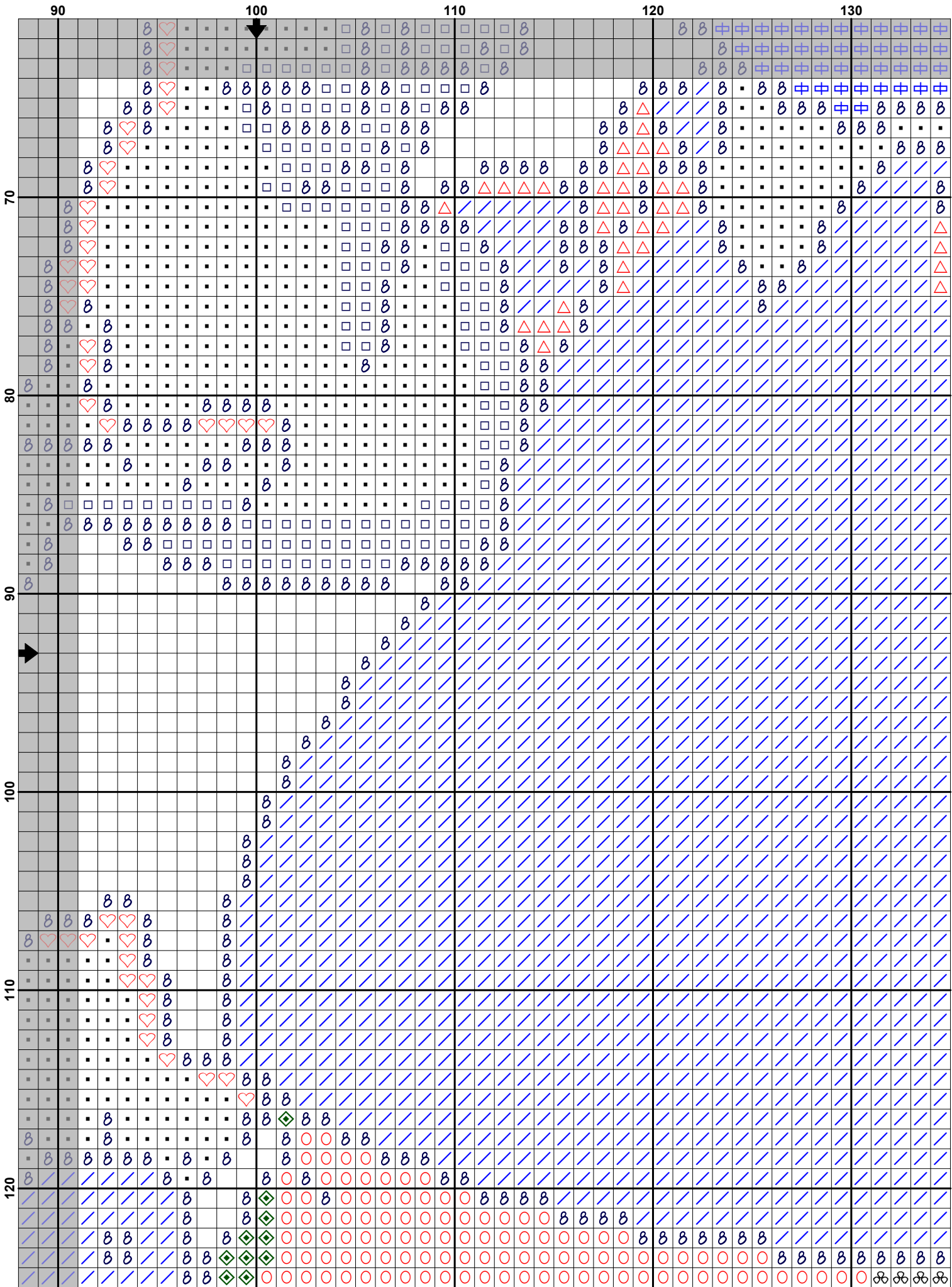
	50										60										70										80										90									
10																																																		
20																																																		
30																																																		
40																																																		
50																																																		
60																																																		

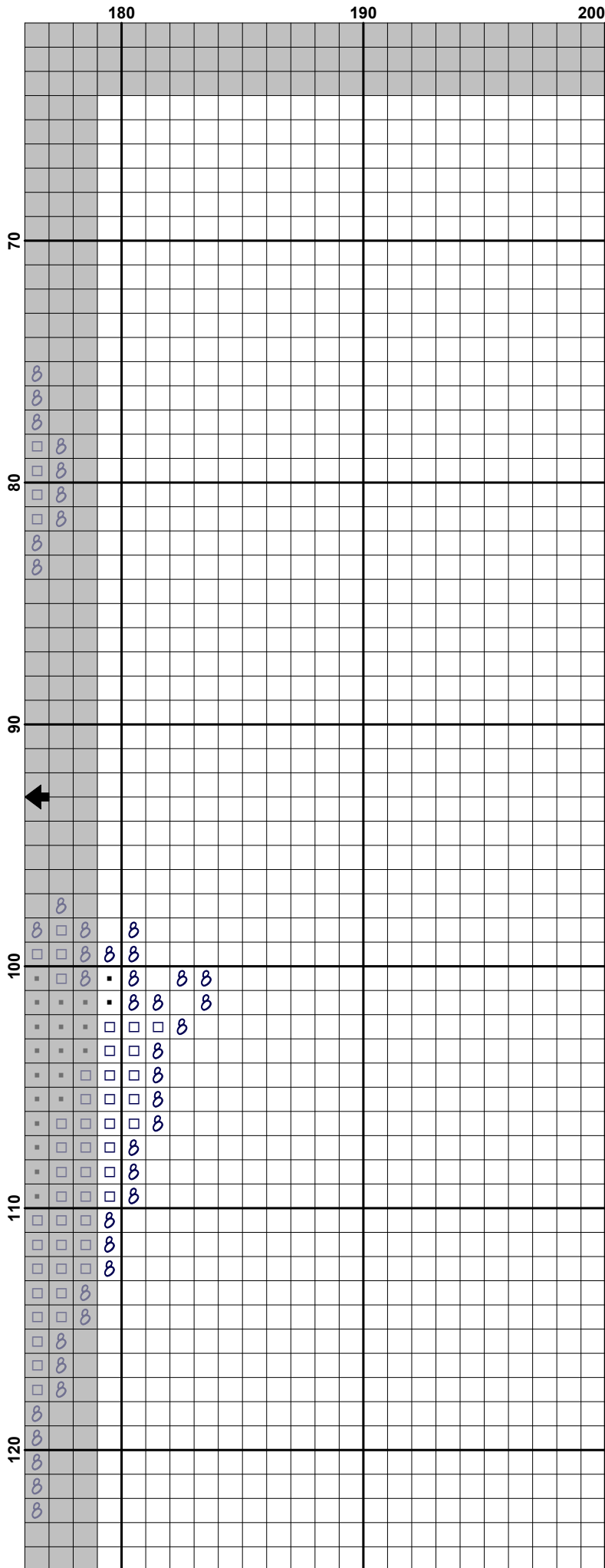
































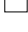




	180	190	200
	⊗		
130	⊗ ⊗ ⊗ ⊗		
140	⊗ ↖ ⊗ ↖ ↖ ⊗ ↖ ↖ ↖ ⊗ ↖ ↖ ↖ ↖ ⊗ ↖ ↖ ↖ ↖ ⊗ ↖ ↖ ↖ ↖ ↖ ⊗ ↖ ↖ ↖ ↖ ↖ ⊗ ↖ ↖ ↖ ↖ ↖ ⊗ ⊗ ⊗ ⊗ ⊗ □ □ □ □		
150	• • • □ • • • □ ⊗ ⊗ • • • □ ⊗ ⊗ • • • □ ⊗ ⊗ • • □ □ ⊗ ⊗ • • □ □ ⊗ ↖ ⊗ • • □ □ ⊗ ↖ ⊗ • • □ ⊗ ↖ ↖ ⊗ • • □ ⊗ ↖ ↖ ⊗ • • □ ⊗ ⊗ ↖ ⊗		
160	⊗ ⊗ ⊗ ⊗ ⊗ ☼ ☼ ☼ ☼ ⊗ ⊗ ☼ ☼ ☼ ☼ ⊗ ⊗ ☼ ☼ ☼ ☼ ⊗ ☼ ☼ ☼ ☼ ⊗ ☼ ☼ ☼ ☼ ⊗ ☼ ☼ ☼ ☼ ⊗ ☼ ☼ ☼ ☼ ⊗ ⊗ ⊗ ⊗ ⊗		
170	⊗ ⊗ ⊗ ⊗ ⊗ ⊗ ⊗ / ⊗ / ⊗ ⊗ ⊗ ⊗ ⊗ ⊗ ⊗ ⊗		
180	⊗ ⊗ ⊗ ⊗ ⊗ ⊗ ⊗ ⊗ ⊗ ⊗ / ⊗ / ⊗ ⊗ / ⊗ ⊗ ⊗		

Fabric: Aida 14, White
182w X 185h Stitches

Size: 14 Count, 33.02w X 33.56h cm

Floss Used for Full Stitches:

Symbol	Strands	Type	Number	Color
	2	DMC	310	Black
	2	DMC	351	Coral
	2	DMC	353	Coral-VY LT
	2	DMC	369	Pistachio Green-VY LT
	2	DMC	413	Pewter Gray-DK
	2	DMC	414	Steel Gray-DK
	2	DMC	415	Pearl Gray
	2	DMC	437	Tan-LT
	2	DMC	445	Lemon-LT
	2	DMC	470	Avocado Green-LT
	2	DMC	472	Avocado Green-UL LT
	2	DMC	517	Wedgewood-DK
	2	DMC	519	Sky Blue
	2	DMC	598	Turquoise-LT
	2	DMC	726	Topaz-LT
	2	DMC	742	Yellow-DK
	2	DMC	813	Blue-LT
	2	DMC	817	Coral Red-VY DK
	2	DMC	824	Blue-VY DK
	2	DMC	827	Blue-VY LT
	2	DMC	3045	Yellow Beige-DK
	2	DMC	3761	Sky Blue-LT
	2	DMC	3844	Bright Turquoise-DK
	2	DMC	3846	Bright Turquoise-LT
	2	DMC	White	White

Usage Summary**Strands Per Skein:** 6**Skein Length:** 795.0 cm

Type	Number	Full	Half	Quarter	Petite	Back(cm)	Str(cm)	Spec(cm)	French	Bead	Skein Est.
DMC 310	3372	0	0	0	0	0.0	0.0	0.0	0	0	2.000
DMC 351	663	0	0	0	0	0.0	0.0	0.0	0	0	1.000
DMC 353	53	0	0	0	0	0.0	0.0	0.0	0	0	1.000
DMC 369	30	0	0	0	0	0.0	0.0	0.0	0	0	1.000
DMC 413	174	0	0	0	0	0.0	0.0	0.0	0	0	1.000
DMC 414	294	0	0	0	0	0.0	0.0	0.0	0	0	1.000
DMC 415	304	0	0	0	0	0.0	0.0	0.0	0	0	1.000
DMC 437	261	0	0	0	0	0.0	0.0	0.0	0	0	1.000
DMC 445	303	0	0	0	0	0.0	0.0	0.0	0	0	1.000
DMC 470	291	0	0	0	0	0.0	0.0	0.0	0	0	1.000
DMC 472	1263	0	0	0	0	0.0	0.0	0.0	0	0	1.000
DMC 517	1646	0	0	0	0	0.0	0.0	0.0	0	0	1.000
DMC 519	288	0	0	0	0	0.0	0.0	0.0	0	0	1.000
DMC 598	22	0	0	0	0	0.0	0.0	0.0	0	0	1.000
DMC 726	3400	0	0	0	0	0.0	0.0	0.0	0	0	2.000
DMC 742	1225	0	0	0	0	0.0	0.0	0.0	0	0	1.000
DMC 813	1659	0	0	0	0	0.0	0.0	0.0	0	0	1.000
DMC 817	150	0	0	0	0	0.0	0.0	0.0	0	0	1.000
DMC 824	323	0	0	0	0	0.0	0.0	0.0	0	0	1.000
DMC 827	131	0	0	0	0	0.0	0.0	0.0	0	0	1.000
DMC 3045	13	0	0	0	0	0.0	0.0	0.0	0	0	1.000
DMC 3761	31	0	0	0	0	0.0	0.0	0.0	0	0	1.000
DMC 3844	46	0	0	0	0	0.0	0.0	0.0	0	0	1.000
DMC 3846	142	0	0	0	0	0.0	0.0	0.0	0	0	1.000
DMC White	2617	0	0	0	0	0.0	0.0	0.0	0	0	2.000